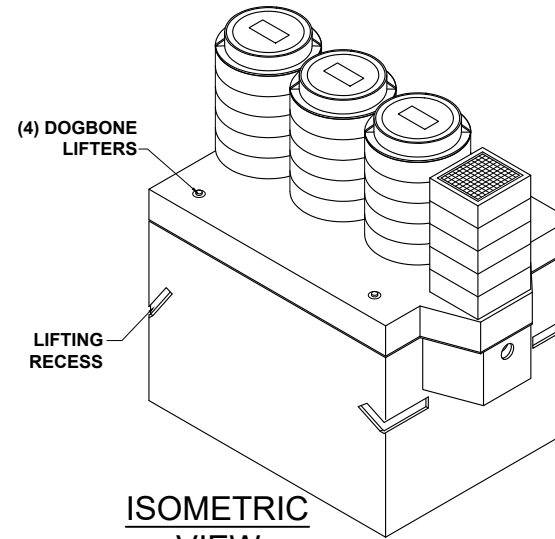
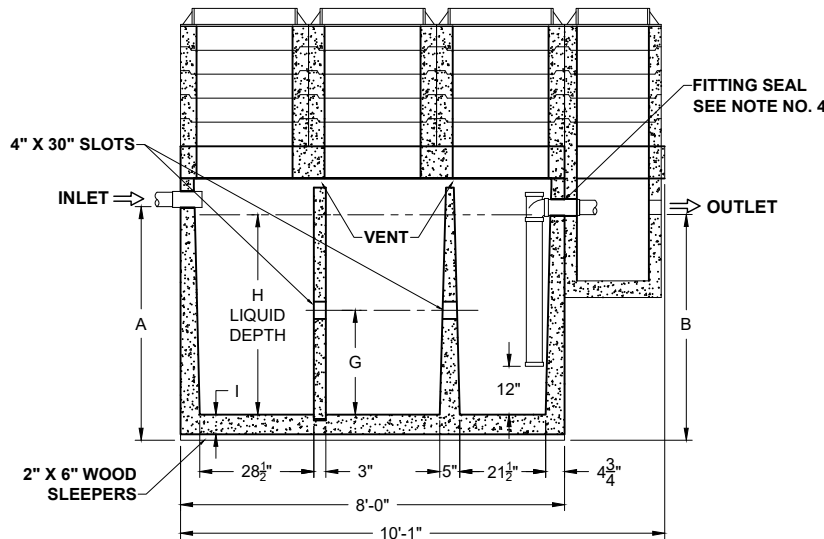


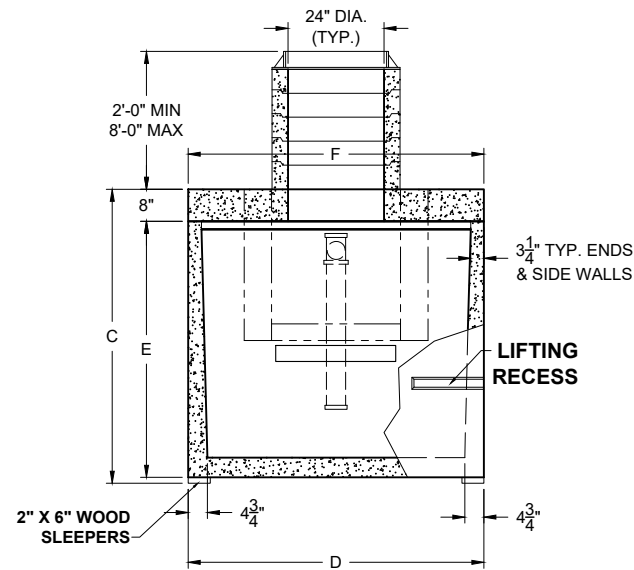
PLAN VIEW



ISOMETRIC VIEW



SECTION THRU "A-A"



SECTION THRU "B-B"

(3) COMPARTMENTS

ALL DIMENSIONS ARE IN INCHES & WEIGHTS IN LBS - (RISER WT. NOT INCLUDED)													EXCAVATION SPECIFICATIONS			
MODEL	A	B	C	D	E	F	G	H	I	J	K	WEIGHT	LENGTH	WIDTH	BELOW INLET	TANK HEIGHT
PC SG-1-750-HD	40	38	55	74	45	74	19 3/4	31 1/2	4 1/2	21 1/2	60	13,155	13'-0"	9'-2"	3'-4"	4'-7"
PC SG-1-1000-HD	50	48	65	74	55	74	24 3/4	41 1/2	4 1/2	21 1/2	60	14,510	13'-0"	9'-2"	4'-2"	5'-5"
PC SG-1-1250-HD	59	57	74	74	64	74	29 1/4	50 1/2	4 1/2	21 1/2	60	15,725	13'-0"	9'-2"	4'-11"	6'-2"
PC SG-1-1500-HD	62 1/2	60 1/2	77 1/2	85	67 1/2	85	30 3/4	53 1/2	5	27 1/2	54	18,345	13'-0"	10'-1"	5'-2 1/2"	6'-5 1/2"

Pro-Cast
PRODUCTS INC.

27417 E. Third St., Highland, CA 92346
909-793-7602 phone 909-793-1283 fax
www.procastproducts.com

PRODUCT NAME:
SAND & GREASE INTERCEPTOR

DESCRIPTION:
**WITH THREE COMPARTMENTS
7540 THRU 1500 GALLONS**

DESIGN SPECIFICATIONS

DESIGN LOAD: **H-20 TRAFFIC
RATED**

WITH DRY SOIL CONDITIONS
(WATER LEVEL BELOW TANK).
SUITABLE SUB-BASE BEDDED
WITH GRANULAR MATERIAL
SHALL BE PREPARED TO
HANDLE ANTICIPATED LOADS.
FOR COMPLETE DESIGN AND
PRODUCT INFORMATION,
PLEASE CONTACT PRO-CAST
PRODUCTS.

PRO-CAST PRODUCTS
RESERVES THE RIGHT TO
MAKE CHANGES TO
PRODUCT DESIGN AND/OR
DIMENSIONS WITHOUT
NOTICE. PLEASE CONTACT
PRO-CAST PRODUCTS
WHENEVER NECESSARY
FOR CONFIRMATION OR
ADVICE ON PRODUCT
DESIGN.

NOTES:

- (NOT USED)
- REFER TO SPECIFICATION SHEET NOS. S-251 & S-252
- REFER TO SPECIFICATION SHEET NO. S-201
- REFER TO SPECIFICATION SHEET NO. S-250

SCALE: **DO NOT SCALE**

DRAWN BY: **TPC 12.20.2024**

REVISED BY:

CHECKED BY:

DRAWING NO.

SG-006